

U.S. Army Public Health Center

# Army Influenza Activity Report

Week ending 08 February 2020 (week 6)

## Influenza Vaccination Coverage\*

As of 12 February 2020

N/A	DoD
94%	Army Active Duty
88%	Army Guard
81%	Army Reserve

\*Data Source: MEDPROS, ASIMS, MRRS

## SUMMARY

During week 6, there were 7,105 specimens were submitted for testing, which represents a 10.4% decrease from week 5. Influenza A represented the majority (67%) of positive specimens submitted for testing. At 26%, PHC-A has the highest percentage of positive specimens for influenza A compared to other regions. Additionally, PHC-A accounted for the majority of positive influenza A specimens (53%); 70% of positive influenza A specimens were from non-AD beneficiaries. Beneficiaries younger than 18 years old formed the majority (50%) of total positive respiratory specimens, which was followed by those 18 to 29 years of age (18%). Eleven influenza-associated hospitalizations were reported in week 6.

## GEOGRAPHIC SPREAD

Click to enlarge image

A Weekly Influenza Surveillance Report Prepared by the Influenza Division  
Weekly Influenza Activity Estimates Reported by State and Territorial Epidemiologists\*  
Week Ending Feb 08, 2020 - Week 6

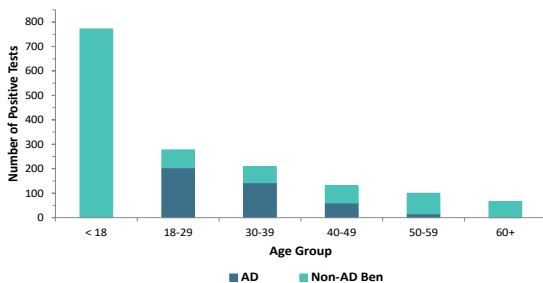


\*This map indicates geographic spread and does not measure the severity of influenza activity.

In week 6, widespread activity was reported in Puerto Rico and 48 states. Regional activity was reported in Hawaii and Oregon. Local activity was reported in the District of Columbia. Sporadic activity was reported in the U.S. Virgin Island, and Guam did not report.

## DEMOGRAPHICS

Positive Respiratory Specimen Results from Army MTFs by Age Group and Beneficiary Status, Week 6

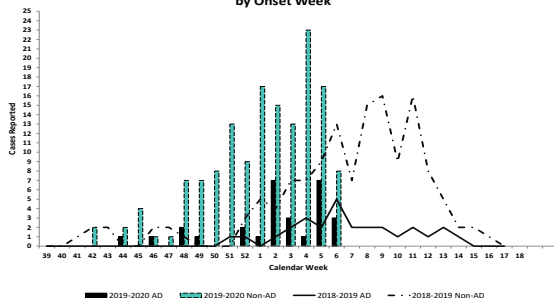


**AD:** In week 6, 424 positive respiratory specimens from Active Duty (AD) Service Members (SM) were submitted. The majority of positive specimens were among those 18 to 29 years of age (n=204, 48%) and was followed by those 30 to 39 years of age (n=143, 34%).

**Non-AD:** The majority of positive respiratory specimens among non-Active Duty beneficiaries were collected from individuals younger than 18 years of age (n=772, 68%).

## INFLUENZA-ASSOCIATED HOSPITALIZATIONS

Army Influenza-Associated Hospitalizations Reported in DRSi by Onset Week



So far this season, 176 hospitalizations have been reported to the DRSi; this is more than double the 73 hospitalizations reported last season during the same period. As of 12 February, 11 influenza-associated hospitalizations with onset dates in week 6 were reported to the DRSi. During week 6 last season, 18 hospitalizations were reported.

\*DRSi does not capture cases older than 65 years old for influenza-associated hospitalizations.

**Additional Resources:** [APHC Influenza Reports](#), [Centers for Disease Control](#), [Disease Reporting System internet](#), [ESSENCE](#)

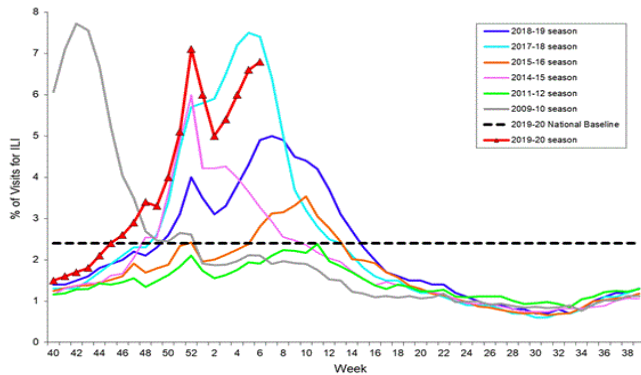
**Key:** ILI-Influenza-Like Illness; DRSi- Disease Reporting System Internet; ADV-Adenovirus; RSV-Respiratory Syncytial Virus; SM-Service Member; MEDPROS- Medical Protection System; ASIMS- Aeromedical Services Information Management System; MRRS- Medical Readiness Reporting System

**Questions?**  
Email [APHC\\_DEP](mailto:APHC_DEP)  
410-436-7605

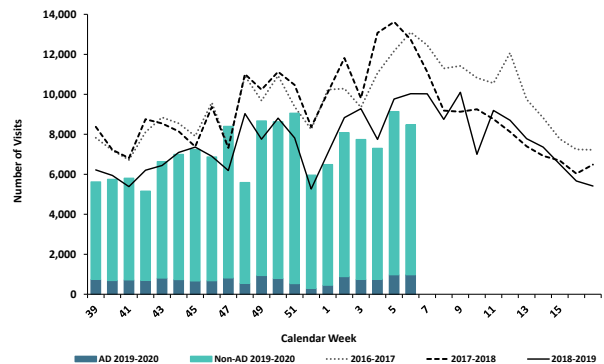
## ILI ACTIVITY - UNITED STATES

## ILI ACTIVITY - ARMY

Percentage of Visits for Influenza-like Illness (ILI) Reported by the U.S. Outpatient Influenza-like Illness Surveillance Network (ILINet), Weekly National Summary, 2019-2020 and Selected Previous Seasons



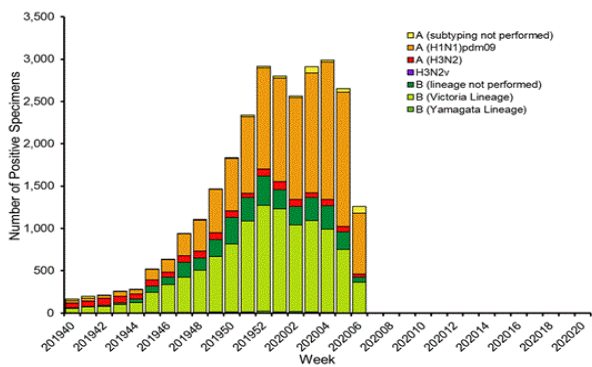
ESSENCE Weekly Outpatient Clinic Visits for Influenza-like Illness  
Army MTFs, All Services, 2016-2020



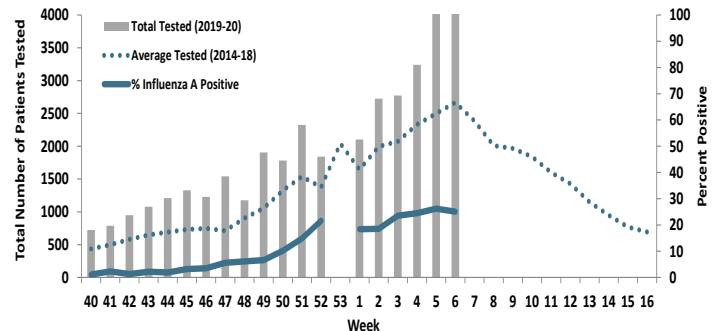
Nationwide in week 6, incident ILI activity was 6.8%. This is above the national baseline of 2.4%. Regionally, the percentage of outpatient visits for ILI ranged from 3.6% to 10.8%. All regions reported a percentage of outpatient visits for ILI above their region-specific baselines. At Army medical treatment facilities, incident ILI activity decreased overall from week 5 to week 6 by 7.3%, while activity for AD SMs increased by 0.1%.

## LABORATORY RESPIRATORY SPECIMEN TESTING

Influenza Positive Tests Reported to CDC by U.S. Public Health Laboratories, National Summary, 2019-2020 Season



Proportion of Positive Influenza A Specimens for U.S. Army 2019-2020



Nationwide, 1,801 specimens were submitted to CDC in week 4, of which 63% (n=1,129) were positive. Influenza A accounted for 55.7% (n=629) of the total positive specimens submitted to the CDC in week 4, while influenza B accounted for 44.3% (n=500). In the Army population, 25% of 4,170 specimens tested for influenza A were positive.

		Week 3	Week 4	Week 5	Week 6	Season Total	
Test Types Among Positive Influenza A Specimens	RAT	363	444	799	777	3482	
	Culture	8	7	3	1	62	
		PCR	282	341	359	268	2376

		Week 3	Week 4	Week 5	Week 6	Season Total
Army MTF Laboratory Results, 2019-20	Influenza A	653	792	1161	1046	5920
	Influenza B	542	548	525	445	4821
	Adenovirus	20	15	17	10	200
	Enterovirus	0	0	0	0	7
	Parainfluenza	7	7	4	2	205
	RSV	114	110	83	51	1434
	Negative	4457	5140	6144	5551	64965
	<b>Total</b>	<b>5793</b>	<b>6612</b>	<b>7934</b>	<b>7105</b>	<b>77552</b>

There were 7,105 respiratory specimens tested in week 6, and 1,554 (21.9%) were positive for any type of respiratory illness. Influenza A accounted for the majority of positive results in week 6 (67.3%, n=1046), and influenza B accounted for 28.6% (n=445). Approximately 4% of specimens were positive for other respiratory illnesses (RSV (3.3%), adenovirus (0.6%), and parainfluenza (0.1%)).

Rapid antigen tests represented 74.3% of positive influenza A tests, followed by PCR tests (25.6%), and cultures (0.1%).

**Locations providing week 6 laboratory data as of 12 February 2020:** Ft. Belvoir, Ft Benning, Ft Bliss, Ft Bragg, Ft Campbell, Ft Carson, Ft Drum, Ft Eustis, Ft Gordon, Ft Hood, Ft Huachuca, Ft Irwin, Ft Jackson, Ft Knox, Ft Leavenworth, Ft Lee, Ft Leonard Wood, Ft Meade, Ft Polk, Ft Riley, Ft Rucker, Ft Sam Houston, Ft. Wainwright, Korea, Landstuhl Regional Medical Center, Redstone Arsenal, Tripler Army Medical Center, the US Military Academy, and Walter Reed National Military Medical Center.

\*NOTE: Madigan AMC data is also received weekly, but cannot be included at this time due to reporting limitations from MHS Genesis.

## LABORATORY RESPIRATORY SPECIMEN TESTING

Region	Installation	Influenza A			Influenza B			Adenovirus		
		No. Tested	% Positive	Baseline % Positive	No. Tested	% Positive	Baseline % Positive	No. Tested	% Positive	Baseline % Positive
PHCA	Ft. Belvoir	253	22.5	30.2	213	18.3	0	87	8	9.3
	Ft. Benning	324	17.6	23.4	320	7.5	0.4			
	Ft. Bragg	526	27.8	44.3			100			
	Ft. Campbell	271	20.7	37.2	269	9.7	0			100
	Ft. Drum	5	20	100	1	100	100			
	Ft. Eustis	66	25.8	44.6	19	100	100			
	Ft. Gordon	193	29	29.6	191	3.1	0			100
	Ft. Jackson	168	19.6	27.7	168	17.3	0			
	Ft. Knox	7	28.6	8.8	7	28.6	0			
	Ft. Lee	75	12	24.2	18	100	100			
	Ft. Meade	25	32	16.7						
	Ft. Rucker	52	21.2	30	50	2	0			
	Ft. Stewart			38.2			0			
	Redstone Arsenal	56	17.9	39.3	56	14.3	0			
West Point Military Academy	246	35.8	54.7	52	38.5	1.4			100	
PHCC	Ft. Bliss	319	16.3	21.8	39	100	0			2.9
	Ft. Carson	197	27.4	18.4			100			
	Ft. Hood	251	25.5	20.9	236	0.8	0.6	44	2.3	12.5
	Ft. Huachuca	87	24.1	19.2	87	16.1	7.7			
	Ft. Irwin	111	25.2	30.6	112	2.7	0			
	Ft. Leavenworth	90	14.4	37.9	90	23.3	3.4			
	Ft. Leonard Wood	135	4.4	15.2	136	30.9	0			100
	Ft. Polk	69	17.4	20	14	100	100			
	Ft. Riley	152	8.6	29.3	152	21.1	0			
	Ft. Sam Houston	501	30.9	31.2	505	8.1	1.4			100
Ft. Sill	83	16.9	14.3	19	100	100				
PHCE	Landstuhl Regional Medical Center	41	14.6	29.2	35	8.6	0	35	2.9	4.3
PHCP	Ft. Wainwright	93	7.5	58.3	93	16.1	0			
	Korea	80	11.3	42	16	0	0	16	6.3	0
	Tripler Army Medical Center	138	29.7	14.6	138	5.1	0	12	0	2.7
Region	Installation	Enterovirus			Parainfluenza			RSV		
		No. Tested	% Positive	Baseline % Pos.	No. Tested	% Positive	Baseline % Pos.	No. Tested	% Positive	Baseline % Pos.
PHCA	Ft. Belvoir				87	0	2.7	207	6.3	7
	Ft. Bragg									
	Ft. Campbell						100			100
	Ft. Drum						100	1	100	0
	Ft. Gordon						100			100
	Ft. Stewart									25
	West Point Military Academy									
PHCC	Ft. Bliss							22	9.1	17.1
	Ft. Carson							26	23.1	44.4
	Ft. Hood				46	4.3	0	64	0	6.8
	Ft. Leavenworth							6	0	12.5
	Ft. Leonard Wood			100						
	Ft. Polk							6	33.3	7.1
	Ft. Riley							44	15.9	6.3
	Ft. Sam Houston									100
Ft. Sill							1	0	0	
PHCE	Landstuhl Regional Medical Center				35	0	2.1	44	9.1	13.4
PHCE	Ft. Wainwright							93	17.2	0.8
	Korea			0	16	0	0	15	0	6.9
	Tripler Army Medical Center	12	0	0	12	0	0			100

No.: Number of specimens tested during MMWR week 6 2020.

% Pos.: Percentage of positive specimens reported during MMWR week 6 2020.

Baseline % Pos.: Percentage of positive specimens reported in MMWR week 6 during influenza seasons from September 2012 - May 2019.

Missing values indicate that specimens were not tested for the disease during the week of interest.



# A Weekly Influenza Surveillance Report Prepared by the Influenza Division

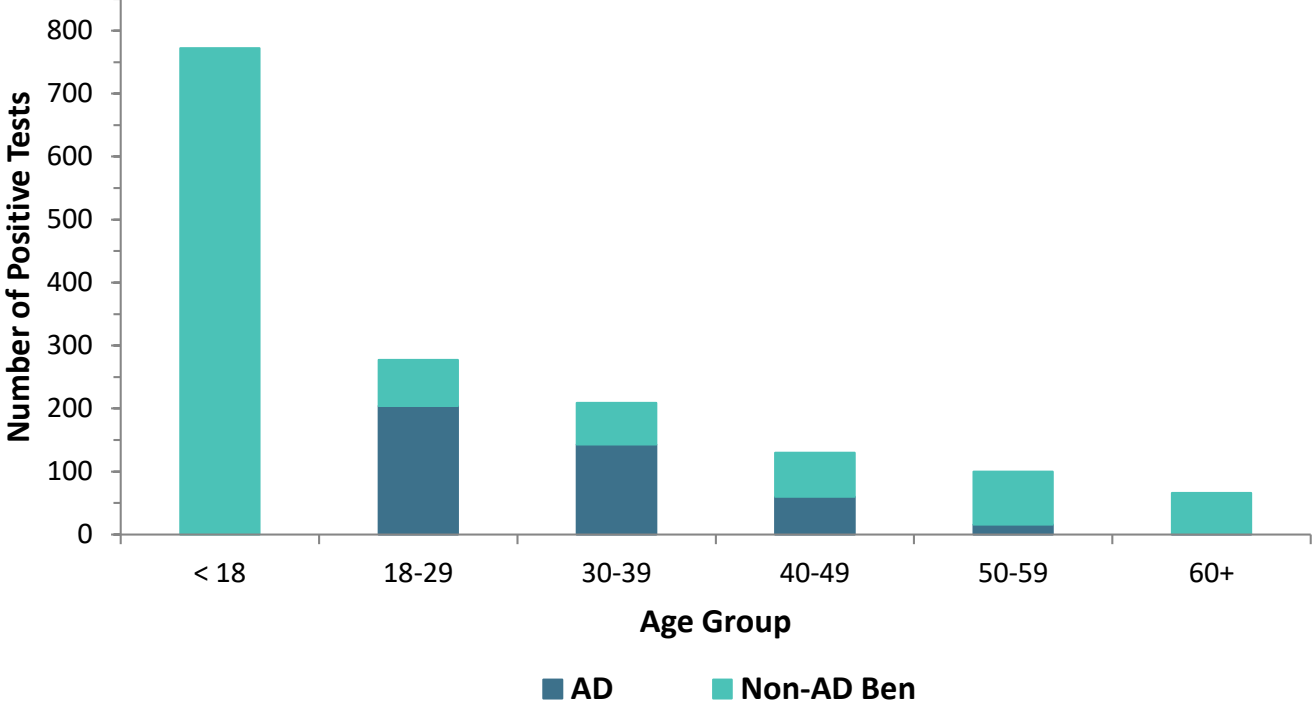
Weekly Influenza Activity Estimates Reported by State and Territorial Epidemiologists\*

Week Ending Feb 08, 2020 - Week 6



\*This map indicates geographic spread and does not measure the severity of influenza activity.

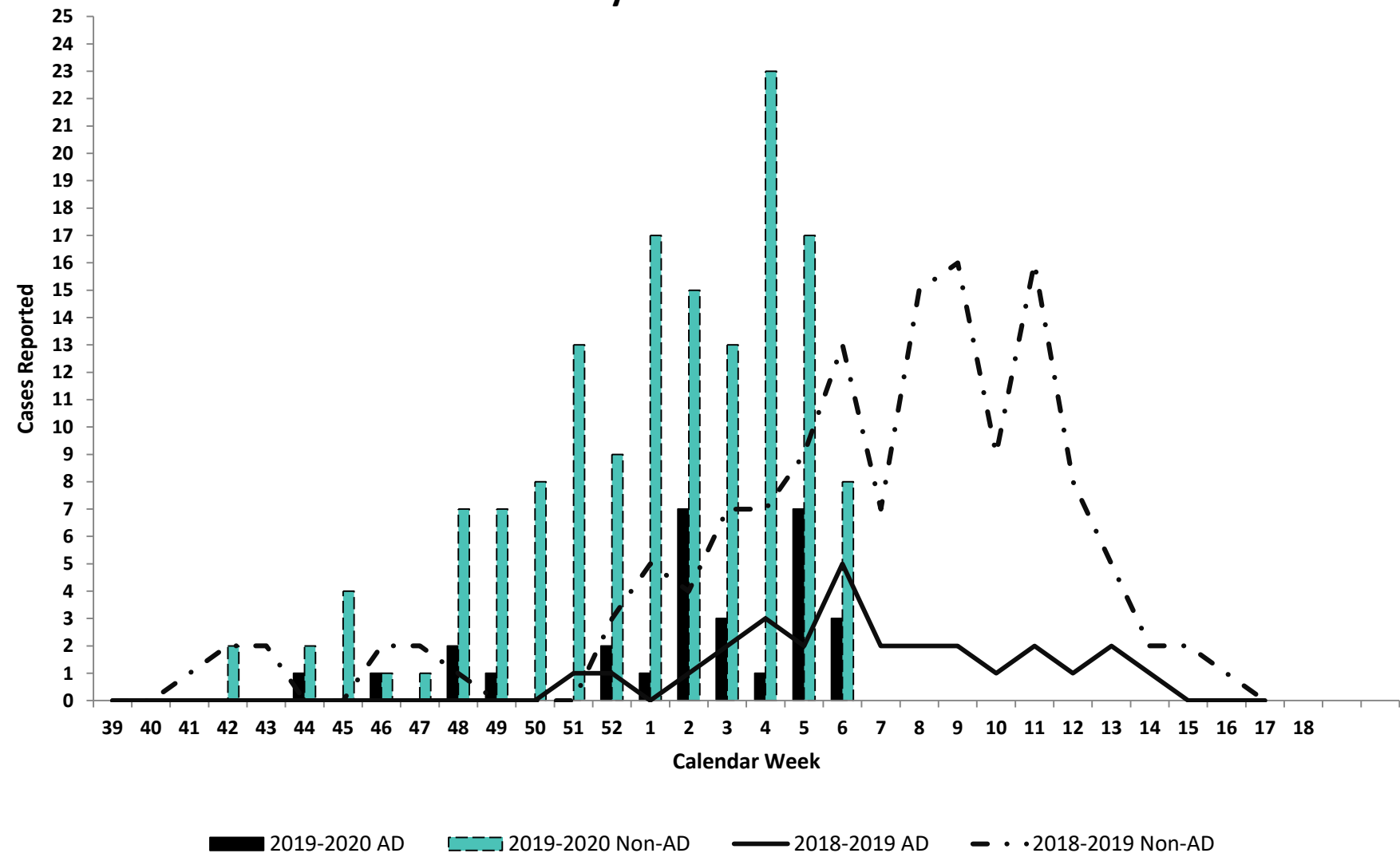
**Positive Respiratory Specimen Results from Army MTFs by Age Group and Beneficiary Status, Week 6**



Week 6			
Age Group	AD	Non-AD Ben	Season Total
< 18	0	772	<b>6896</b>
18-29	204	73	<b>2141</b>
30-39	143	66	<b>1496</b>
40-49	60	70	<b>831</b>
50-59	16	84	<b>635</b>
60+	1	65	<b>588</b>
<b>Total</b>	<b>424</b>	<b>1130</b>	<b>12587</b>

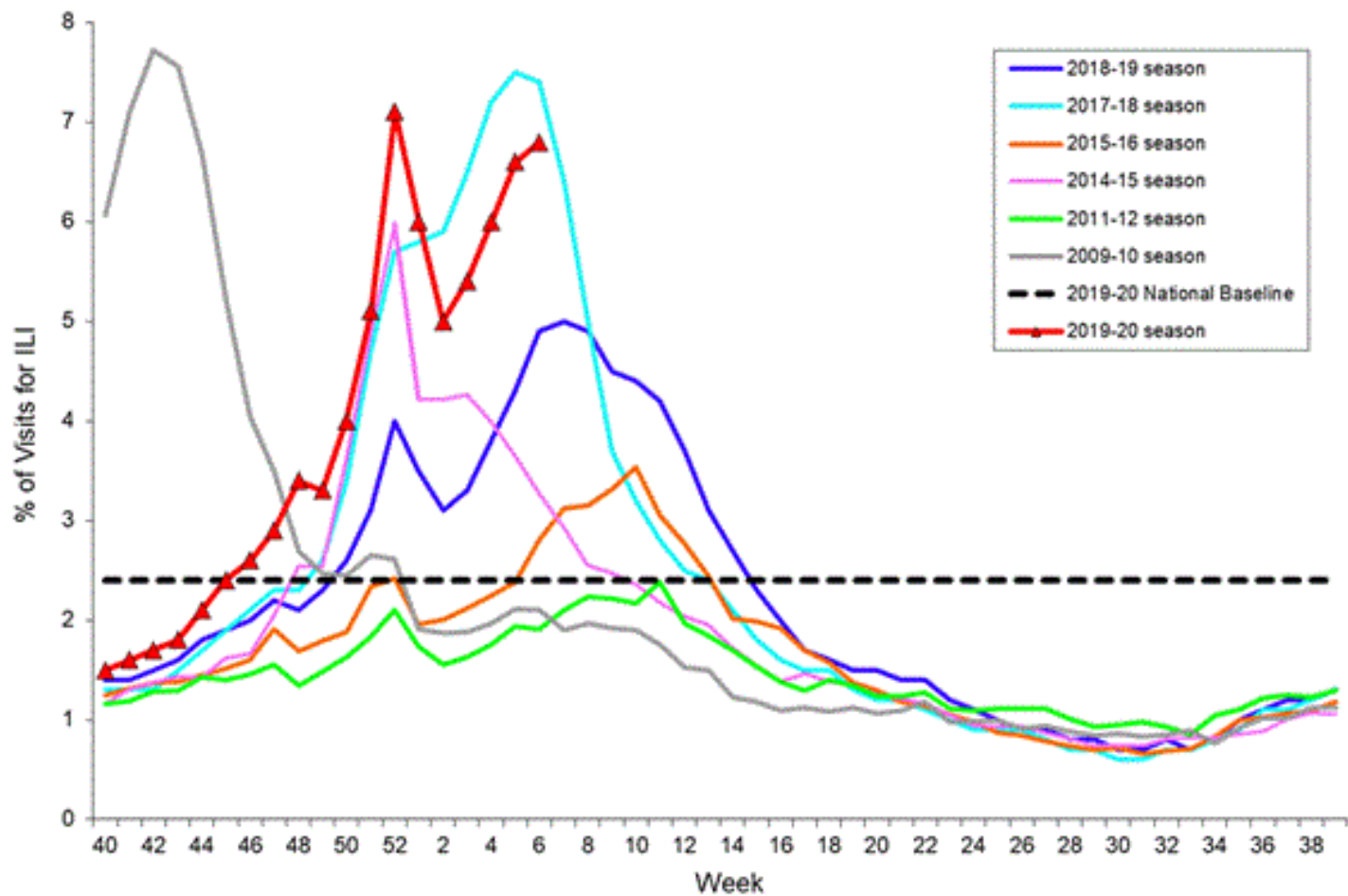


# Army Influenza-Associated Hospitalizations Reported in DRSi by Onset Week



**Note:** Reportable influenza cases are defined as only cases that have been hospitalized and are under the age of 65.  
Data as of 12 February 2020.

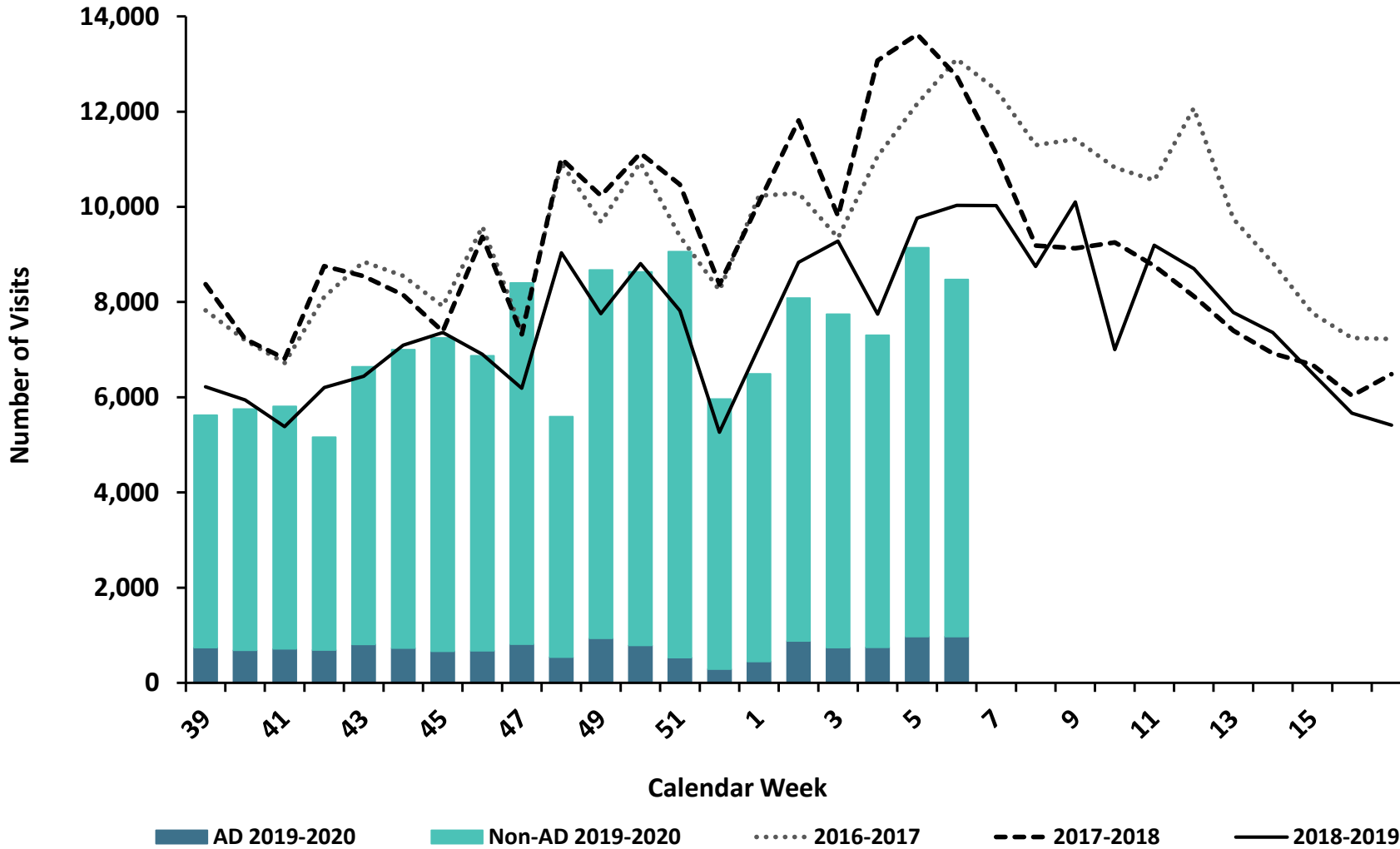
Percentage of Visits for Influenza-like Illness (ILI) Reported by the U.S. Outpatient Influenza-like Illness Surveillance Network (ILINet), Weekly National Summary, 2019-2020 and Selected Previous Seasons



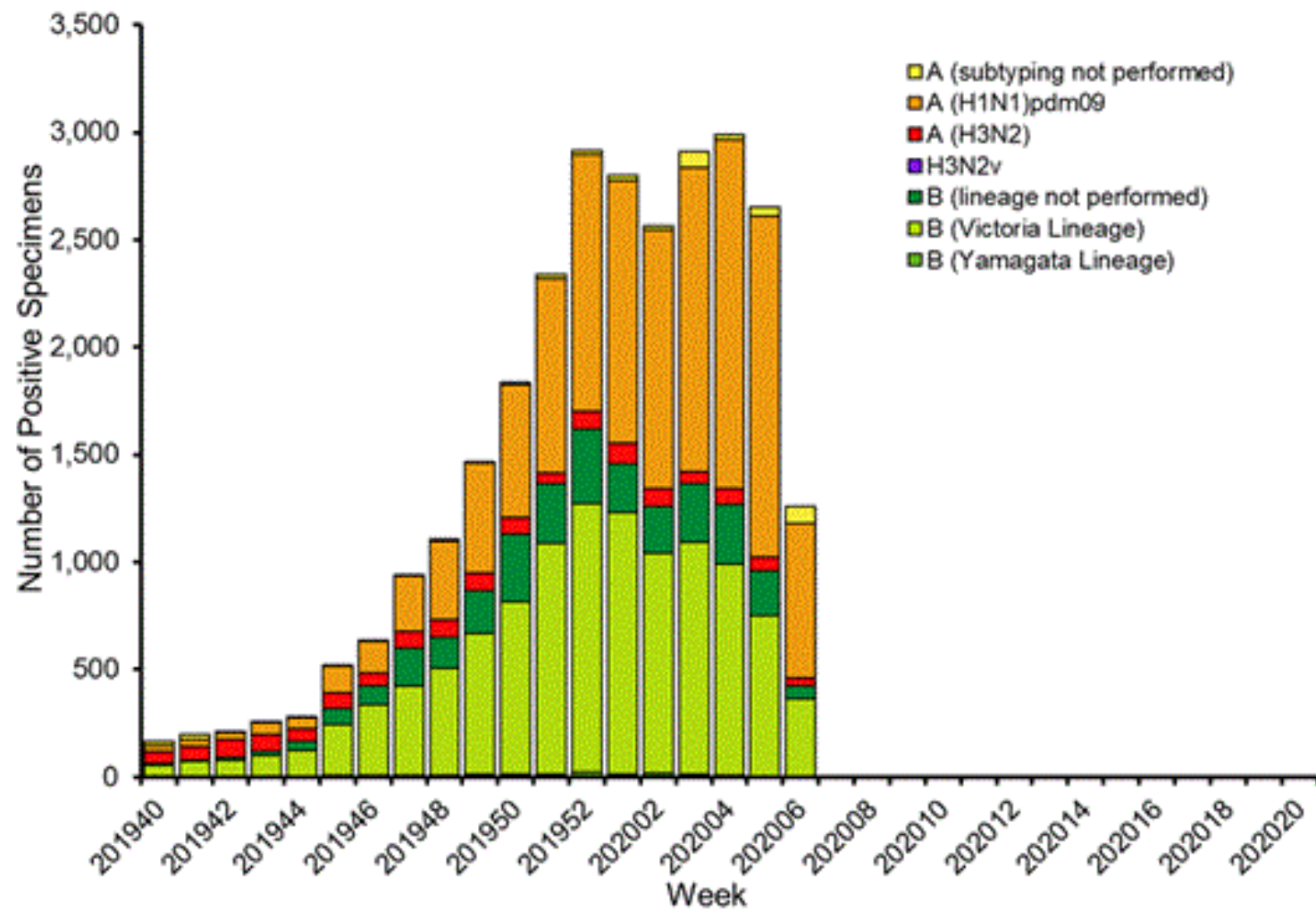


# ESSENCE Weekly Outpatient Clinic Visits for Influenza-like Illness

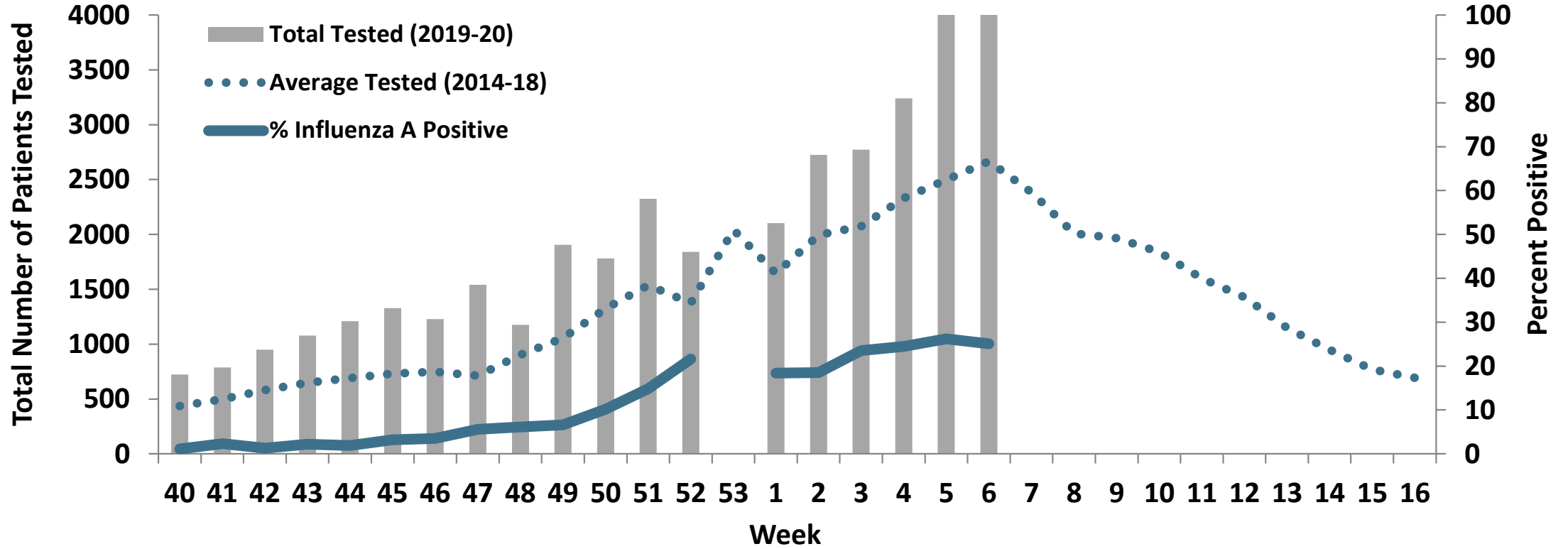
Army MTFs, All Services, 2016-2020



## Influenza Positive Tests Reported to CDC by U.S. Public Health Laboratories, National Summary, 2019-2020 Season



Proportion of Positive Influenza A Specimens for U.S. Army 2019-2020



## Laboratory Respiratory Specimen Testing: Weeks 3 – 6

		Week 3	Week 4	Week 5	Week 6	Season Total
<b>Test Types Among Positive Influenza A Specimens</b>	<b>RAT</b>	363	444	799	777	<b>3482</b>
	<b>Culture</b>	8	7	3	1	<b>62</b>
	<b>PCR</b>	282	341	359	268	<b>2376</b>

<b>Army MTF Laboratory Results, 2019-20</b>	<b>Influenza A</b>	653	792	1161	1046	<b>5920</b>
	<b>Influenza B</b>	542	548	525	445	<b>4821</b>
	<b>Adenovirus</b>	20	15	17	10	<b>200</b>
	<b>Enterovirus</b>	0	0	0	0	<b>7</b>
	<b>Parainfluenza</b>	7	7	4	2	<b>205</b>
	<b>RSV</b>	114	110	83	51	<b>1434</b>
	<b>Negative</b>	4457	5140	6144	5551	<b>64965</b>
	<b>Total</b>	<b>5793</b>	<b>6612</b>	<b>7934</b>	<b>7105</b>	<b>77552</b>

